

ISSUED:  
04/01/19 PARTIAL D.D.

merritt  
cieslak  
design [p l c]

ARCHITECTURE | PLANNING

33610 Grand River  
Farmington, Michigan 4833  
248-374-0001  
[www.mcdarchitects.com](http://www.mcdarchitects.com)

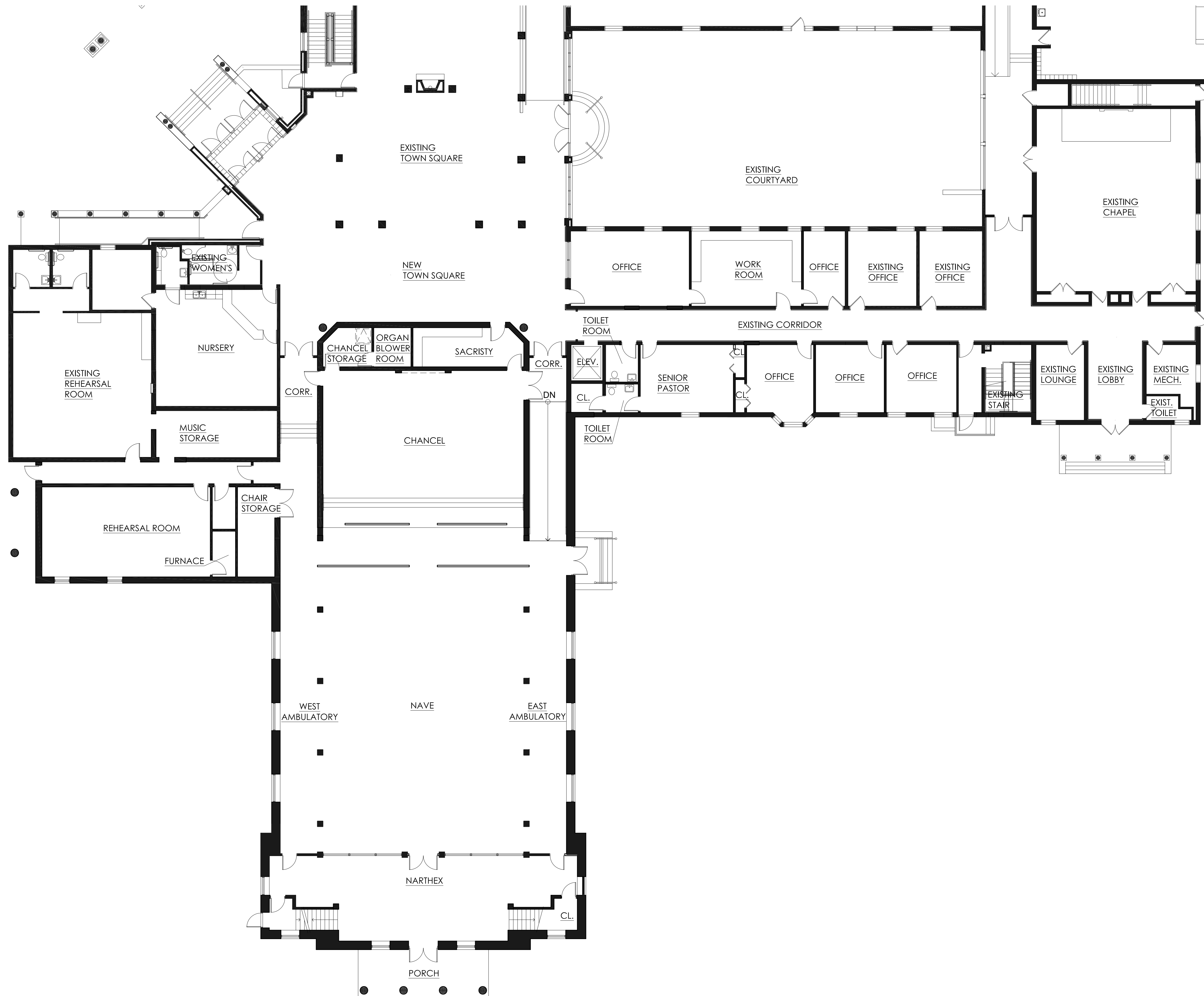
LUTHERAN  
CHURCH OF  
THE REDEEMER

MAPLE ROAD  
BIRMINGHAM, MICHIGAN

## SITE PLAN

These documents have been prepared specifically for this Project. They are not suitable for use on other projects or in other locations without approval and participation of the Architect. Reproduction for bidding or any other purpose is expressly prohibited.

Project No.	Sheet No.
5165	C-101



1  
A-104

## MAIN LEVEL FLOOR PLAN

SCALE: 3/32" = 1'-0"



ISSUED:

merritt  
cieslak  
design llc

ARCHITECTURE | PLANNING

33610 Grand River  
Farmington, Michigan 48335  
248-374-0001  
www.mcdarchitects.com

## LUTHERAN CHURCH OF THE REDEEMER

1800 W. MAPLE ROAD  
BIRMINGHAM, MICHIGAN

## MAIN LEVEL FLOOR PLAN

These documents have been prepared specifically for this Project. They are not suitable for use on other projects or in other locations without approval and participation of the Architect. Reproduction for bidding or any other purpose is expressly prohibited.

Project No.

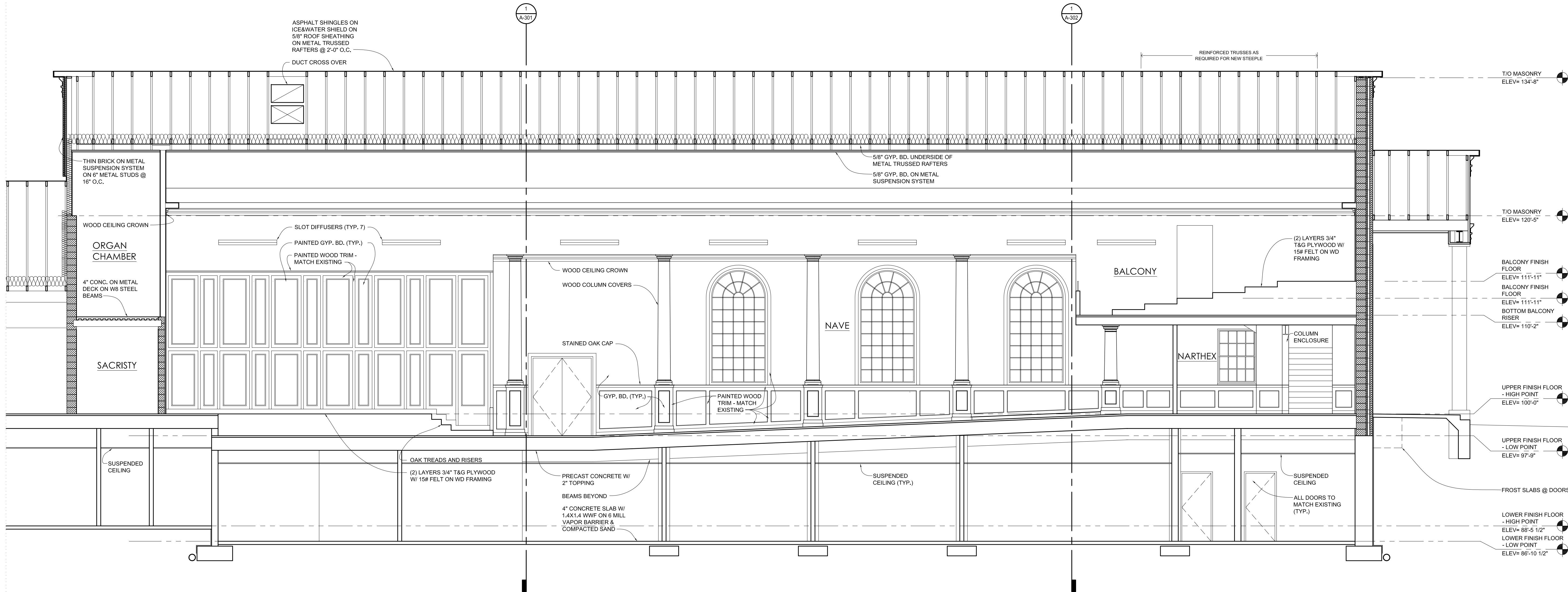
15165

Sheet No.

A-2







1  
A-303

LONGITUDINAL SECTION

SCALE: 3/16" = 1'-0"

ISSUED:  
04/01/19 PARTIAL D.D.

merritt  
cieslak  
design

ARCHITECTURE | PLANNING

33610 Grand River  
Farmington, Michigan 48335  
248-374-0001  
www.mcdarchitects.com

LUTHERAN  
CHURCH OF  
THE REDEEMER

MAPLE ROAD  
BIRMINGHAM, MICHIGAN

LONGITUDINAL  
SECTION

These documents have been  
prepared specifically for this  
Project. They are not suitable for  
use on other projects or in other  
locations without approval and  
participation of the Architect.  
Reproduction for bidding or any  
other purpose is expressly  
prohibited.

Project No.

Sheet No.

15165

A-303